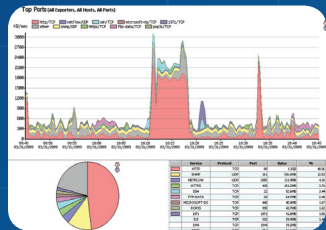


## NetFlow Analyzer

Tightly integrated with InterMapper, InterMapperFlows™ puts you one-click away from bandwidth hogs.



InterMapper Flows collects and reports on NetFlow and sFlow data. Access to total Flows data allows you to

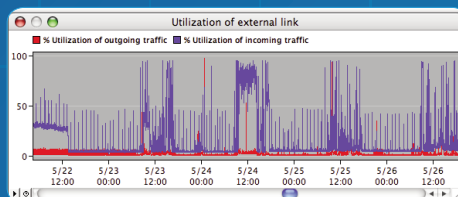
drill down for highly granular analysis due to full session data retention. Reports detail top talkers, hosts, protocols and sessions.

InterMapper Flows is excellent at helping you detect and analyze patterns in network traffic. It tells you who is using bandwidth and what the protocol is. It helps you see when an intervention can prevent downtime.

## Device-Specific Diagnostics & Performance Trend Reports

### Traffic Data

Transmit and receive statistics, utilization rates, device names, link types, descriptions, status, IP and MAC addresses.



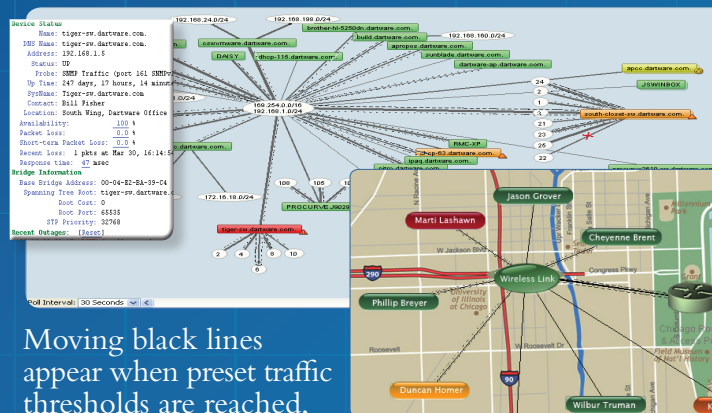
### Description and Status Information

Device name, IP address, sysLocation, and sysContact, response time, packet loss rate, uptime and availability.

## InterMapper™ Live Network Maps

InterMapper displays dynamic data, allowing you to see the status of all network connections and devices without ever having to refresh your browser.

Right-clicking on any mapped device or depicted network connection opens status windows that detail real time SNMP and other synthetic transactions.



Moving black lines appear when preset traffic thresholds are reached, showing the heavy traffic areas and blockages on the network.

Network devices are color coded to provide at-a-glance status information. Red means a device is down. Yellow and orange mean that performance is degrading. Green signals that performance meets set thresholds.

### Performance Measurement

Temperatures, CPU and memory utilization, transactions per second, etc.

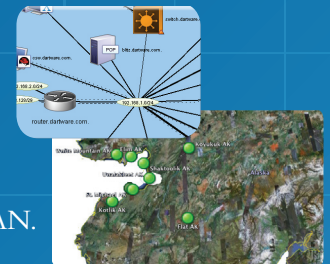
SQL Database: Data for reporting on historical trends for a particular device is stored and viewable via a set of packaged Crystal Reports® or your own SQL queries.

## Scalable Monitoring

InterMapper RemoteAccess™ works through firewalls and across VPNs. A single port connects to your InterMapper server.

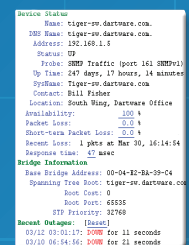
Consult top-level and sub-maps from remote locations. Diagnose network problems that have generated alerts. Dispatch and track the work of field staff.

InterMapper RemoteAccess makes it easy to scale up from monitoring a single building LAN to a multi-locational WAN.



## Flexible Alerting and Notifications

Multiple custom probes allow users to collect information and set thresholds for hundreds of data points. Users can set alerts against the thresholds. Sounds, email messages, SMS, pages, SNMP traps to selected receivers, WinPopup messages, or syslog notifications issue early warnings on underperforming devices.



Setting alerts warns you when services are deteriorating, enabling resolution before a critical state is reached.

Dartware was founded — and its InterMapper products developed — by IT managers. The group's intimate understanding of network management continues to differentiate Dartware's technology.

InterMapper has been licensed to thousands of organizations around the world including financial, educational, healthcare, manufacturing, retail, and government organizations.

Dartware, LLC  
66-7 Benning Street  
West Lebanon, NH 03784 USA  
[www.InterMapper.com](http://www.InterMapper.com)

Toll Free: 877-276-6903  
Tel: 603-643-9600  
Fax: 603-643-2289  
Email: [info@intermapper.com](mailto:info@intermapper.com)

Dartware, LLC is a privately held software development firm focused on proactive network management solutions that help maximize uptime.

Live Network Monitoring  
NetFlow Analysis

Diagnostics and Performance Trend Reporting  
SQL Database and Data Reporting  
Flexible Alerting and Notifications  
Scalable, Distributed Monitoring  
Data Import and Export  
Secure Access



interMapper  
Network Monitoring  
by Dartware